



3.9 miles—Wenham to Boxford

Phases I—III complete: 2.3 miles—Washington St. to Wenham. Stone dust surface is “accessible”. Also for road & mtn. bikes, walkers, joggers, and horses.

Phase IV: 1.6 miles Washington St. to Boxford. The trail is open with a grass/single track surface. The finish surface is now designed and waiting for National Grid approval. Thanks for your donations!

The trail distance from Boxford to Lowell St. in Peabody is about 15 miles!

When will the trail be completed?

- We now have 2.3 miles of completed trail from Washington St. to Wenham town line. This was all accomplished with no town funding. We received grants, donations and lot of volunteer hours and services. Recently installed were solar powered lights at the Rt. 1 and Rt. 97 crossings, street crossing signs and 15 bat houses.
- With your support we will finish the 1.6 miles of dust trail to the Boxford town line—we are waiting for approval from National Grid on the \$30,000 trail design funded by donations. Fund raising for this last phase will start upon trail approval.

Donate **NOW** for the
“Topsfield Linear Common”

Please send your deductible donations to the:
“Friends of Topsfield Trails”. 52 Prospect St.,
Topsfield, Ma 01983

This is the TLC—“Topsfield Linear Common”



...One Very Happy Trail User...

TOPSFIELD LINEAR COMMON

*a recreation path
-for all-
through Topsfield*

Friends of Topsfield Trails, Inc.

52 Prospect St., Topsfield, MA 01983

a 501(c)3 charitable org.

www.FriendsOfTopsfieldTrails.Org June 2017

TOPSFIELD'S RAILROAD HISTORY

Courtesy of the Topsfield Historical Society

THE RAILROAD COMES TO TOPSFIELD

TOPSFIELD WAS PART OF THE DANVERS AND GEORGETOWN RAILROAD LINE WHICH WAS CHARTERED ON MAY 7, 1851 BY JOHN WRIGHT AND ASA PINGREE OF TOPSFIELD AND SAMUEL LITTLE AND HENRY POOR OF GEORGETOWN. THE CHARTER GAVE THEM THE AUTHORITY TO CONSTRUCT AND MAINTAIN A RAILROAD STARTING IN GEORGETOWN AND RUNNING THROUGH ROWLEY, IPWSICH, BOXFORD, TOPSFIELD, WENHAM AND INTO THE VILLAGE OF NORTH DANVERS, THERE TO UNITE WITH THE ESSEX RAILROAD. GEORGETOWN WAS HEAVILY INVOLVED IN THE MANUFACTURE OF BOOTS AND SHOES AND THE RAILROAD WAS SEEN AS A MEANS TO SUPPLY RAW MATERIAL AND SHIP FINISHED PRODUCTS. TOPSFIELD EXPECTED TO BENEFIT BY SHIPPING HARVESTED ICE FROM HOODS POND, HOWEVER THE ORIGINAL PLANNED ROUTE WAS LATER REDIRECTED AWAY FROM THE POND, MUCH TO THE DISMAY OF THE TOPSFIELD SUBSCRIBERS.

ON APRIL 1, 1853 GROUND WAS BROKEN BY IRISH WORKMEN BROUGHT TO TOPSFIELD FOR THAT PURPOSE. RAIL CARS FIRST RAN INTO TOPSFIELD FROM GEORGETOWN ON AUGUST 13, 1854 AND THE ROAD OPENED FOR PUBLIC TRAVEL ON OCTOBER 23, 1854. BECAUSE THE CITIZENS OF NEWBURYPORT WANTED A NEW ROUTE AS AN ALTERNATIVE TO THE EASTERN RAILROAD, IN 1855 THE LINE OFFICIALLY MERGED INTO THE NEWBURYPORT RAILROAD. IN 1860 THE BOSTON AND MAINE RAILROAD TOOK CONTROL OF THE NEWBURYPORT BRANCH.

THE END OF THE RAILROAD ERA

FOR OVER 100 YEARS THE RAILROAD TRANSPORTED WORKERS, BUSINESS MEN, LEISURE TRAVELERS AND FREIGHT TO AND FROM TOPSFIELD FROM SURROUNDING TOWNS AND BOSTON. THE LAST PASSENGER TRAIN TO TOPSFIELD RAN ON APRIL 27, 1969, WITH ABOUT 300 PASSENGERS ON BOARD. THE LAST FREIGHT TRAIN LEFT IN 1977. BY 1981 THE LINE HAD BEEN FORMALLY ABANDONED AND TRANSFERRED TO THE MASSACHUSETTS BAY TRANSIT AUTHORITY (MBTA).



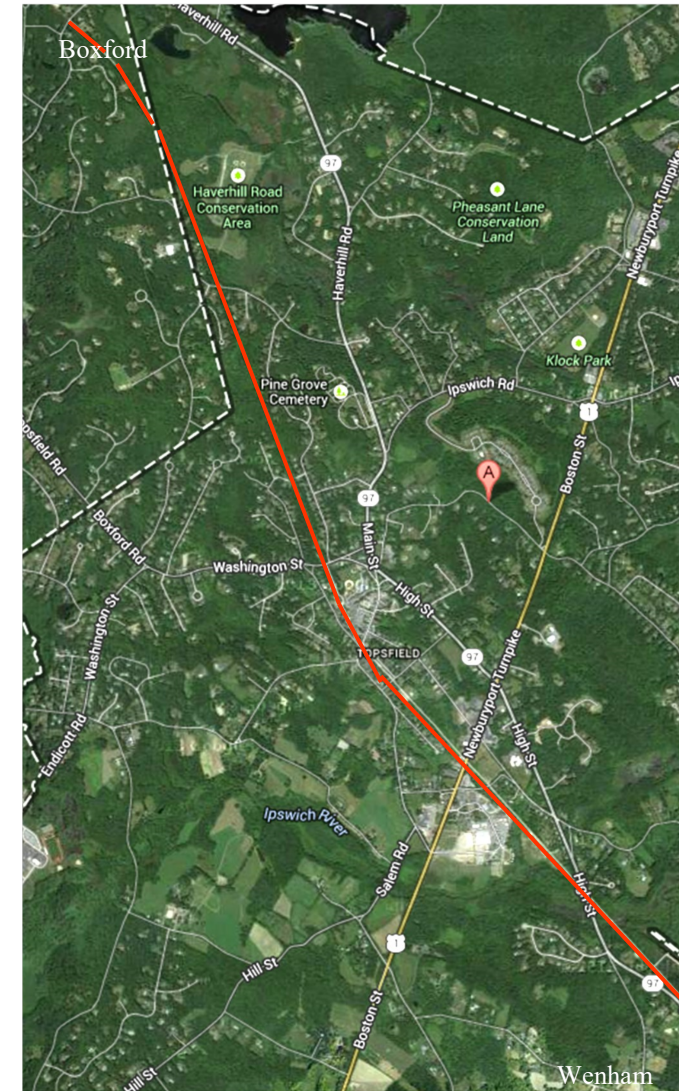
BOSTON & MAINE RAILROAD PASSENGER TRAIN PREPARES TO LEAVE TOPSFIELD WITH MORNING COMMUTERS IN 1946. LOCOMOTIVE IS A 2-6-0 (MOGUL) TYPE #1464, BUILT IN 1909. NOTE TINY STATION IN RIGHT BACKGROUND WHICH REPLACED THE BIG STATION WHICH ONCE STOOD ON THIS PARK ST. SITE. STEAM IS POPPING OFF AND THE CONDUCTOR IS READY TO CALL, "ALL ABOARD".



RAILROAD STATION ON PARK ST., BUILT 1896, TORN DOWN ABOUT 1938, LOOKING UP FROM SUMMER TOWARDS MAIN ST. HOUSE ON RIGHT IS THE OVIDA BOUCHARD HOUSE, KNOWN AS THE MARY KIMBALL HOUSE, BUILT 1889.

A NEW BEGINNING

THE TOPSFIELD LINEAR COMMON WILL CONNECT WENHAM WITH TOPSFIELD AND THE FAIRGROUNDS WITH TOPSFIELD CENTER AND THE PROCTOR SCHOOL. FROM THERE THE TLC WILL CONNECT WITH PYE BROOK COMMUNITY PARK AND CONTINUE TO BOXFORD. THE TRAIL PROVIDES A SAFE ROUTE TO SCHOOL FOR OUR CHILDREN. LITTLE BROOK VILLAGE AND WASHINGTON MEADOWS RESIDENTS USE THE SIDEWALK ALONG WASHINGTON ST. TO ACCESS THE TLC.



TOPSFIELD LINEAR COMMON

BEING BUILT BY GRANTS, GIFTS AND GENEROSITY. NO TOWN FUNDING!

Please contribute at: www.FriendsOfTopsfieldTrails.Org

NOW CONNECTING 12 MILES FROM TOPSFIELD TO THE NORTHSHORE SHOPPING CTR THROUGH WENHAM, DANVERS AND PEABODY!